

Waukegan Township can assist you with:

- ◆ Complimentary Notary
- ◆ Voter Registration
- ◆ Passport Site

# Waukegan Township Park Place Preview



Patricia Jones, M. Ed  
Waukegan Township  
Supervisor

**CALLING ALL  
SUPERHEROES!**

## July & August, 2018

**\*5K New Location...Same Great Cause!**



### Be A Hero, Race for Seniors

**Superhero 5K Run/Walk & 1 Mile Kids Fun Run**

**September 22, 2018**

**Waukegan Sports Park, 3391 W Beach Rd, Waukegan, IL**

**New Location!**

7:00 a.m. - 8:30 a.m.  
- Onsite  
Registration  
8:30 a.m. - Kids'  
1 Mile Run  
9:00 a.m. - Adult  
Runners Start  
9:15 a.m. - Adult  
Walkers Start  
\* All participants  
will receive a  
medal. Special  
awards are given to  
oldest, youngest, &  
fastest in each age  
category.



**Register online:**

**[www.waukegantownship.com](http://www.waukegantownship.com)**



**Waukegan Township will provide shuttle bus service from Park Place to and from the 5K course location. For more information call 847-244-9242 or email [cpwhite@waukegantownship.com](mailto:cpwhite@waukegantownship.com).**

- Fun event for the entire family
- Awards given
- Professional timing service
- Immediate timing results online
- Entertainment and exciting giveaways
- Become a part of this great opportunity to help others

**Costumes  
Strongly  
Encouraged!**

For information or sponsorship opportunity call  
847-244-4900 or email  
[cpwhite@waukegantownship.com](mailto:cpwhite@waukegantownship.com).

You may also register in person:  
5k Headquarters, Park Place 414  
S. Lewis Ave., Waukegan

**Fee \$40 \*Includes T-shirt**



Dear Friends,

The summertime is a time of fun and relaxation for most people. But for seniors, the heat and sun can be dangerous if the proper precautions aren't taken. Here are some great tips that aging adults, as well as their caregivers, can use to make sure they have a fun, safe summer. Make sure you stay hydrated, talk to your doctor about medications that may be affected by the heat, keep cool, stay in touch with your family members, know who to call in case of an emergency, wear the right clothes, protect your eyes with sunglasses, wear sunscreen, cover your head with a hat, and exercise smart.

Park Place will be closed Wednesday, July 4, 2018, in observance of Independence Day.

During normal business hours, Park Place is a cooling center. After hours, Park Place will remain open when the temperature is above 90 degrees. Feel free to join us.

We are only a few weeks away from our annual 5K event! There's still time to register to support this family fun fundraising event. This year will be our 20th year! A huge thank you goes to the community for your continued support. Remember, another way to show support is by making a donation by mail or online at [www.waukegantownship.com](http://www.waukegantownship.com). Donations are tax-deductible and go directly toward providing services to adults 55 and better.

The Illinois Department on Aging Senior Health Insurance Program (SHIP) provides assistance with any questions

pertaining to Medicare Parts A, B, C, & D. Program hours are M-F 9:00 a.m. - 12:00 p.m., at Park Place. Call 847-244-9242 for more information. and appointment.

Need a great place to hold a meeting, birthday party, wedding reception, anniversary, bridal shower or other gatherings? Our spacious room can accommodate up to 80 guests. Tables and chairs included in rental. Decoration rate available upon request. Available for rental, linens, chair covers, sashes, and table runners. For rental rates and charges call 847-244-9242 or visit us online at [www.waukegantownship.com](http://www.waukegantownship.com) to reserve your day.

Remember to stop by your senior neighbor's home for wellness checks during these summer months.



**Newsletters are available online. Please visit our website at [www.waukegantownship.com](http://www.waukegantownship.com)  
Or email [kwoods@waukegantownship.com](mailto:kwoods@waukegantownship.com) to be added to our email list.**



# Make Time To Get Away



## Traveling Book Club Thursday, July 19, 2018

Sometimes it's not enough to just read a great book- you want to discuss, explore, and even visit the world of the book and author. We will travel from Park Place to Northwestern University with Dr. Njoki McElroy, author of "1012 Natchez". Dr. McElroy was a professor at Northwestern University and a long-time resident of North Chicago. She will be doing a book reading at the African Studies Library on campus. Dr. McElroy will be signing books for members of our club. After the reading, we will enjoy a great Caribbean/Soul Food meal at Jennifer's Edibles in Evanston, Illinois. Books will be available for purchase for \$10. Lunch will be on your own. The trip departs Park Place at 10:00 AM & Returns 2:30 PM. \*No charge for Transportation. Please RSVP. For more information call 847-244-9242 or email [scunningham@waukegantownship.com](mailto:scunningham@waukegantownship.com).



## Race Day at Arlington Park Thursday, July 26, 2018

Experience the thrill of live horse racing at Arlington Park! The shuttle departs Park Place at 11:00 a.m. A \$63 fee includes transportation, admission, racing guide, a seat in the room, lunch with dessert, & tip.



## Frank Lloyd Wright Home and Studio Wednesday, August 8, 2018

Immerse yourself in the art and architecture of Frank Lloyd Wright as we tour Oak Park, IL. The day will include visits to the Frank Lloyd Wright Home and Studio, guided bus tour of his Oak Park buildings, tour of the Unity Temple and lunch. Fee is \$95 per person and includes tours, lunch, and transportation. Trip departs from Park Place at 8:00 a.m.



## Lake Geneva Mail Boat Tour Tuesday, August 21, 2018

Ride on the most exciting tour Lake Geneva Cruise Line offers. In addition to front row shoreline views, the unique mail delivery will have you on the edge of your seat. After the excitement of the tour you'll be hungry, so enjoy lunch at Popeyes Restaurant overlooking the lake. There will be time to browse and shop lovely Lake Geneva after lunch. Fee of \$75 includes transportation, cruise, and lunch. Departs Park Place at 7:45 a.m.

**Trips are open to adults 18 and older and residents in or outside of Waukegan Township. For more information or to register call 847-244-9242 or email [lpable@waukegantownship.com](mailto:lpable@waukegantownship.com).**

### Superhero 5K Run/Walk & 1 Mile Kids Fun Run



Waukegan Sports Park,  
3391 W Beach Rd, Waukegan, IL

**September 22, 2018**

**Costumes Strongly Encouraged!**  
**Awards to the best costume**



### SHOPPING/TOUR!

#### Macy's Holiday Traditions Tour - Thursday, November 15, 2018

Beat the crowds and enjoy the flagship former Marshall Field State Street store, now Macy's dressed in holiday splendor! This tour includes the history of Macy's holiday traditions, animated store window displays, a taste of Frango® Mint Chocolates, and of course the 2-story Great Tree. A \$69 fee Includes transportation, tour and dining in the Walnut Room.

#### Ikea / Woodfield Mall - Tuesday, December 11, 2018

The shuttle will depart Park Place at 8:45 a.m. for Ikea. Enjoy their bargain breakfast and shop until 1:00 p.m. and head over to Woodfield Mall. Shop until 3:00 p.m. Return to Park Place. \$15 fee includes transportation.





## Ten Chimney's Estate Tour & Lunch

**Tuesday, September 25, 2018**



Explore Ten Chimneys, the estate lovingly created by theatre legends Alfred Lunt and Lynn Fontanne. This world-class house museum is a national resource for theatre, arts, and arts education. The full estate tour provides the optimum Ten Chimneys experience. This tour includes the three-story Main House, the rustic Studio, the Enchanting Cottage, the restored gardens, and the exteriors of the Pool house, Greenhouse, and Creamery. Lunch will follow at the Union House. Those who are unable to walk on uneven surfaces or stairs may opt to tour the main house only. The fee of \$87 includes transportation, tour and lunch. Trip will depart Park at 8:30 a.m.

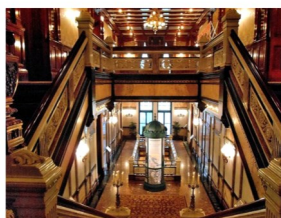
## Fall Color Cruise on the Mississippi

**Wednesday, October 17, 2018**



All aboard the Celebration Belle paddleboat to cruise from Moline, IL to Muscatine, Iowa! Enjoy a sumptuous lunch buffet, live entertainment as you cruise through two lock and dams to view fall colors on this 4 hour cruise down the Mississippi. Fee of \$147 includes transportation, cruise, buffet and light snacks on the bus. Trip will depart Park Place at 6:00 a.m. and return sometime after 6:00 p.m.

## Driehaus Museum & Eataly - Tuesday, November 6, 2018

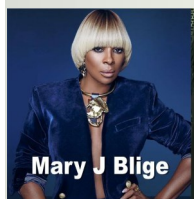


Tour the historic home and museum of the Gilded Age! The Richard H. Driehaus Museum explores the art, architecture, and design of the late 19th and early 20th centuries with a focus on the Gilded Age. The Museum is located just steps from the Magnificent Mile within the meticulously restored Nickerson Mansion, renowned as Gilded Age Chicago's "Marble Palace." After the tour we will visit Eataly! Eataly is a large Italian marketplace with a variety of restaurants, food and beverage counters, bakery, retail items, and a cooking school. At Eataly you will shop and dine on your own. A fee of \$48 includes museum fees and transportation. The bus departs park Place at 8:00 a.m.

# RAVINIA



The Ravinia Season is here! Enjoy easy access to the park as we relax in lawn seats and see some of the season's most highly demanded performers. Shuttle departs Park Place at 4:00 p.m. Gates open at 5:00 p.m. Show starts at 8:00 p.m. **Open to all ages! price includes shuttle to and from Ravinia.**



### Mary J. Blige - Friday, July 20, 2018

Enjoy an evening with Mary J. Blige under the stars at Ravinia! With eight multiplatinum albums to her name, as well as nine Grammy Awards (plus 32 nominations), two Academy Award nominations, two Golden Globe nominations, and a SAG nomination, among many other accolades, Mary J. Blige has cemented herself as a global superstar and one of the defining voices in contemporary music. Fee of \$77 includes lawn tickets, lunch, and round-trip transportation from Park Place.



### Michael Feinstein & Kristin Chenoweth - Tuesday, August 14, 2018

Enjoy Michael Jay Feinstein, singer, pianist, and music revivalist of the Great American Songbook in concert with Broadway star Kristin Chenoweth for an evening of fantastic performances. Fee of \$15 includes lawn tickets, lunch, and round-trip transportation from Park Place. \*Tickets courtesy of Ravinia's Opportunity Lawn Pass Program.



### Earth Wind and Fire - Friday, August 17, 2018

Experience Earth, Wind & Fire at Ravinia! Earth, Wind & Fire is a band that spans the musical genres of R&B, soul, jazz, pop, rock, funk, disco, Latin, African and gospel. They are one of the most successful and critically acclaimed bands of the twentieth century! We will depart Park Place at 4:00 p.m. Gates open at 5:00 p.m. for the 8:00 p.m. concert. Fee of \$76 includes lawn tickets, lunch, and round-trip transportation.



### The Gipsy Kings - Friday, September 14, 2018

Enjoy Salsa under the stars at Ravinia! The Gipsy Kings are a group of flamenco, salsa and pop musicians from Arles and Montpellier in the south of France, who perform in Andalusian Spanish. They are known for bringing Catalan rumba, a pop-oriented music distantly derived from traditional flamenco music, to worldwide audiences. Fee of \$15 includes lawn tickets, lunch, and round-trip transportation from Park Place. \*Tickets courtesy of Ravinia's Opportunity Lawn Pass Program.

## **Palliative Medicine “What Is It ? Do I Need It?”- Lunch & Learn Presentation - Tues, July 10th - 11am - 12pm**

Today we are hearing the term “palliative medicine” more and more. Come to learn what palliative medicine is and how it is used to manage pain and symptoms when dealing with a variety of illnesses and declining health. Hospice care will also be defined and time for questions. Please RSVP by July 6th to, (847) 244-9242 or email [mhartke@waukegantownship.com](mailto:mhartke@waukegantownship.com). Workshop at Park Place.

## **It's On The Way - New Medicare Card - Wed, July 11th - 11am - 12pm -**

## **Ya Viene En Camino - Su Nueva Tarjeta De Medicare - Fri, July 13th - 11am - 12pm**

Come with questions regarding your Medicare card. For more information call 847-244-9242 or email [ogarcia@waukegantownship.com](mailto:ogarcia@waukegantownship.com). Workshop at Park Place.

## **Foot Care and Medicare - Wed, July 18th - 11am - 12pm**

Learn about the proper foot care and what podiatry services Medicare covers. For more information call 847-244-9242 or email [ogarcia@waukegantownship.com](mailto:ogarcia@waukegantownship.com). Workshop at Park Place.

## **Make The Most Out of Your Doctor Visit - Tues, July 24th - 10am - 11am**

Are you making the most out of your doctor's visits? Join us as we welcome our speaker to explain what questions should be asked at every visit to ensure you are receiving the best information and services possible. For more information please call 847-244-9242 or email [ogarcia@waukegantownship.com](mailto:ogarcia@waukegantownship.com). Workshop at Park Place.

## **Everything You Need To Know About Shingles - Wed, July 25th - 11am - 12pm**

Come join us as we learn and understand the causes, symptoms, and medication for shingles. For more information call 847-244-9242 or email [ogarcia@waukegantownship.com](mailto:ogarcia@waukegantownship.com). Workshop at Park Place.

## **Dial-A-Ride - Wed, August 1st - 11am - 12pm**

Need a ride? This workshop will feature a presentation on our recently expanded Dial A Ride program. The Dial-A-Ride program provides a vital lifeline for people who are seniors (60+) and disabled residents (16+) to access health centers. For more information please call 847-244-9242 or email [ogarcia@waukegantownship.com](mailto:ogarcia@waukegantownship.com). Workshop at Park Place.

## **Vitamins & Supplements - Tues, August 7th - 10am - 11am**

If you take vitamins and supplements as a way to improve your health, there are things you need to understand to make sure you're receiving the greatest benefit from your efforts. This workshop will offer simple facts to consider as you work with your doctor and pharmacist to determine what supplements may be the most effective – and safest – for you. For more information call 847-244-9242 or email [ogarcia@waukegantownship.com](mailto:ogarcia@waukegantownship.com). Workshop at Park Place.

## **How Much Does A Funeral Cost? - Wed, August 8th - 11am - 12pm**

When it is time to plan the funeral of a loved one or designing your own, two questions immediately come to mind: What will it cost? And what do I need to do? Learn the answers to these questions and more from Congdon Funeral Homes. They will be here to provide you with the information you need! For more information call 847-244-9242 or email [mhartke@waukegantownship.com](mailto:mhartke@waukegantownship.com). Workshop at Park Place.

## **Understanding Medicare Part D Policy Selection - Tues, August 14th - 10am - 11am -**

## **Apreda Como Elegir Su Poliza De Parte D - Fri, August 10th - 11am - 12pm**

Come with questions regarding your Medicare card. For more information call 847-244-9242 or email [ogarcia@waukegantownship.com](mailto:ogarcia@waukegantownship.com). Workshop at Park Place. Part D open enrollment is on its way. Come to learn how to properly select the Prescription Drug Plan that works best for you. This workshop is complimentary. Call 847-244-9242 or email [ogarcia@waukegantownship.com](mailto:ogarcia@waukegantownship.com).

## **Buzz Off! Learn How To Protect Yourself & Keep Mosquitoes Off Your Yard - Wed, August 15th - 11am - 12pm**

This workshop will provide information about the best ways to keep mosquitoes off your lawn and off you! For more information please call 847-244-9242 or email [ogarcia@waukegantownship.com](mailto:ogarcia@waukegantownship.com). Workshop at Park Place.

## **Do You Qualify For A Free Phone? - Tues, August 21st - 10am - 11am**

Safe Link is a program serving eligible households and is provided by TracFone Wireless, Inc. The Safelink Wireless Affiliate Program provides a way for you to offer mobile phone service to eligible consumers at no cost to them. Come to see if you qualify? For more information please call 847-244-9242 or email [ogarcia@waukegantownship.com](mailto:ogarcia@waukegantownship.com). Workshop at Park Place.

## **Learn How to Save Money on Home Energy? - Wed, August 22nd - 11am - 12pm**

Discover useful tips to reduce the cost of your home energy and help keep money in your pocket. For more information please call 847-244-9242 or email [ogarcia@waukegantownship.com](mailto:ogarcia@waukegantownship.com). Workshop at Park Place.



Thanks in part from a  
Healthcare Foundation of  
Northern Lake County grant.



Waukegan Township also provides limited complimentary  
transportation to Waukegan Township residents. Call: (847) 599-  
2936 or email [lnava@waukegantownship.com](mailto:lnava@waukegantownship.com) 3 days in advance.

# Enhancement Groups & Services

GRANDPARENTS & OTHER RELATIVE CAREGIVER'S SUPPORT GROUP - MEETS THE 2ND MON OF EACH MONTH - 5:30PM - 7PM - **No Meeting In July!**

LOLLIE DREW LOW VISION SUPPORT GROUP - MEETS THE 2ND TUES OF EACH MONTH - 10AM

GRUPO DE APOYO EN ESPANOL - SPANISH SPEAKING RESOURCE GROUP - MEETS THE 2ND FRI OF EACH MONTH - 11AM

COPING WITH GRIEF GROUP - MEETS THE 2ND WED OF EACH MONTH - 10AM

READERS DELIGHT BOOK CLUB - MEETS THE 1ST MON OF EACH MONTH - 1PM

WRITER'S CIRCLE - MEETS THE FIRST THURS OF EACH MONTH - 1PM

RED HAT SOCIETY - MEETS THE THIRD THURS OF EACH MONTH - NOON

The Park Place Memory Café' meets every 2nd Wednesday 1:30 pm - 3:00 pm. Share your stories and socialize with others who have concerns about their memory or the memory of a loved one.

## Technology Center

### Open Lab at the Tech Center

Park Place has six computers for use by those 55 and better during open hours when classes are not in session. Complimentary

### **Trouble Shooting & More: Help Desk at the Tech Center!**

Frustrations? Our skilled volunteers will be here each Monday from 1:30 p.m. - 3:00 p.m. to answer questions on your technology devices, programs, social media or applications. Drop by any time during open hours! This is a complimentary service.



### **Complimentary Hearing & Vision Screening!**

**Tuesday, July 17, 2018  
9 AM - 1 PM**

The Lions of Illinois Foundation & Lions of Illinois are proud to offer complimentary screenings to detect hearing and vision loss.

## **Park Place Bingo has a new time!**

Every Thursday, Noon at Park Place. \*Food can be purchased  
11am - 3pm.



### **Rosalind Franklin Community Care Connection Complimentary Health Screenings -**

10:00 am - 1:00 pm. at Park Place.  
Call for days.

### **AARP Safety Driving**

Tues, July 24th & Wed, July 25th  
10:00 am - 2:00 pm

### **Scholl College of Podiatric Medicine**

Park Place complimentary foot care  
1:00 pm - 3:00 pm by appointment. At Park Place.  
Tues, July 10th & 24th / Aug 7th & 21st.

### **Secretary of State - Rules of the Road -**

Wed, Aug 22nd - Reservations are required in advance for the "Rules of the Road."  
@ Park Place.

## **The SSI Representative Payee Program Gets Updated**

In April 2018, the President signed into law bipartisan Congressional legislation updating the Representative Payee program.

The law eliminates the need for annual accounting by representative payees who are parents of a minor or disabled person who is living with the beneficiary is also excluded from annual reporting.

The Bill addresses ongoing concerns with representative payees of foster children.

Another provision will allow beneficiaries who expect that they will need representative payee to make the designation at any time, even if the application for disability has not been approved.

In addition, another often farcical loophole has been closed in that someone who has a representative payee to manage their benefits can not serve as representative payee for another person. For more information or questions visit [www.ssa.gov/payee](http://www.ssa.gov/payee) or call 1-800-772-1213.



## **Superhero 5K Run/Walk & 1 Mile Kids Fun Run**

**Waukegan Sports Park,  
3391 W Beach Rd, Waukegan, IL**

**September 22, 2018**



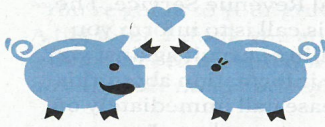




# Information you should know

## Your Family Financial Exam

When it comes to knowledge of close relations and money, do you have the goods?  
Ask yourself these true-false questions to find out By GEORGE MANNES



**1** About 60 percent of married couples in the U.S. make their household financial decisions as a team.

☐ TRUE ☐ FALSE



**2** Middle-income parents average \$37,000 on child care and school costs per kid—before that child heads off to college.

☐ TRUE ☐ FALSE



**3** On average, parents think kids should get their first allowance at age 7.

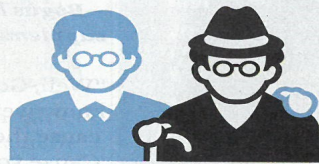
☐ TRUE ☐ FALSE

**4** Roughly 29 percent of women in dual-income marriages make more money than their spouses.

☐ TRUE ☐ FALSE

**5** Parents think it's more important to talk about funding elder care than their adult children do.

☐ TRUE ☐ FALSE



**6** An "average" family in the top 10 percent of wealth in the United States receives an inheritance of about \$367,000.

☐ TRUE ☐ FALSE



**7** The average payout from a visit from the tooth fairy in 2017 was \$4.13.

☐ TRUE ☐ FALSE

**8** A family in the middle of the U.S. income range spends about one-third of its budget on housing.

☐ TRUE ☐ FALSE



**9** Twenty-three percent of grandparents help pay for their grandchildren's education.

☐ TRUE ☐ FALSE

**10** A firstborn child will probably end up as the highest-earning sibling in the family.

☐ TRUE ☐ FALSE

By AARP Magazine

**1 FALSE** Only about 37 percent of couples share financial decision-making equally.

**2 TRUE** In 1960 the amount was a mere \$4,000 per child—in today's dollars!

**3 FALSE** The typical parent wants to hold out until age 10.

**4 TRUE** That's up from approximately 16 percent in 1981.

**5 FALSE** In a survey, 74 percent of kids said it was important, compared with 52 percent of parents.

**6 TRUE** Meanwhile, families at the median level of wealth

in the U.S. report an average inheritance of around \$16,000.

**7 TRUE** It's even higher in the West—an average of \$6.

**8 TRUE** Low-income families spend approximately 41 percent, and

high-income families spend closer to 30 percent.

**9 FALSE** About 53 percent do. But 23 percent contribute to their grandkids' health and dental bills.

**10 TRUE** Eldest children are also more likely to work in management when they grow up.



You can stay healthy with regular visits to your primary care provider (PCP), who can tell you what you need to know to be proactive about your health and reach your personal goals.

Your life is busy, and trends in today's primary care options are a reflection of that. Primary care providers (PCPs) offer health and wellness services through extended weekday and weekend hours, as well as technology based services that allow you to make online appointments, provide personal and family health history online, and in some instance have a virtual office visit.

The story of your health history is ever-evolving, changing as you mature. Before you go to your next primary care visit, make a list to inform your PCP about any changes in:

- ♦ Diet
- ♦ Exercise routine
- ♦ Family health history
- ♦ Personal health history
- ♦ Prescriptions and over-the-counter medications or supplements you routinely take.



By Vista Health System


**DID YOU KNOW?**



Nearly 40% of American adults have total cholesterol levels that measure 200 mg/dl or greater, indicating borderline high cholesterol, according to an American Heart Association 2017 report.

**A VARIETY OF  
ICE CREAM  
SUNDAE TOPPINGS**

**ENTERTAINMENT  
BY ROCKIN ROLLIE!**



**FRIDAY, JULY 20TH  
1 PM - 3PM**

**FOR ADULTS 55 OR BETTER      Waukegan Township Residents**

**At Park Place -  
414 S. Lewis  
847-244-9242**

***Ice Cream Social***



## Let's Fly Away!

**Greece - Departure: October 16, 2018 - Double: \$2,899; Single: \$3,398 (\$199 insurance)**

**Noah's Ark - Departure: October 14, 2018 - October 16, 2018 - Twin: \$619 Single \$788 (\$60 insurance)**

**New York - Departs November 19, 2018 - Double: \$2,199; Single: \$3,068 (\$199 insurance)**

**Israel & Jordan - Departure: November 6, 2019 - Double: \$4,044; Single: \$5,003 (\$199 insurance)**

**Italy - 2020, Belize - 2021, & Turks 2022**

Trips are open to adults 18 and older and residents in or outside of Waukegan Township. You can register online at [www.waukegantownship.com](http://www.waukegantownship.com) or call 847-244-9242/email [lpable@waukegantownship.com](mailto:lpable@waukegantownship.com).

## PEOPLE YOU SHOULD KNOW



**Norma Jean Jensen** was born on June 3, 1936, passed away on Sunday, May 13, 2018. Norma was very active in her community. She was a dedicated, hardworking, energetic, and became a full-time volunteer after her retirement from the Waukegan Public

Schools. Norma has received numerous recognitions for her volunteer work. Including the President's Call to Service Award. She gave many hours to Waukegan Township as a front Desk Ambassador, Vista, Greenbelt Cultural Center, Habitat for Humanity, AARP, Lake County Council for Seniors. During her time in Hawaii at the Queens Medical Center Hawaii, Norma was awarded by Governor Ben Cayetano, the Outstanding Humanitarian Award. Norma and her husband Wayne were the Park Place Senior Prom King and Queen in 2003. She continued volunteering right up to her passing. Other hobbies Norma enjoyed were cooking, baking, crocheting, knitting, sewing, watching football, watching hockey, listening to classical music, flower arranging, shopping, and gardening. Norma stated "I would like to invite everyone to become a volunteer. The rewards are more for the volunteer than for the person place, or thing you are volunteering for. If anyone wants to bring some meaning to their lives, see me. I can get you in". Norma was married to Wayne Childers for 25 Years.



**Roger Melton** was born in 1928 and passed in 2018. Roger was an avid volunteer for Park Place for many years. He was the Coordinator for Senior Net computer learning program for five years and coached many computer classes. In 2000 Roger received the Jacqueline Klies Award. This award is given to the volunteer who has exhibited dedication, spirit and commitment to the computer learning center at Park Place. Roger was an Engineer for Boeing, Continental Can and retired from Juno Electric. Roger was married to Meredith for 14 years. In 2001 Roger and Meredith became the Park Place Senior Prom King & Queen.

## Exercise & Fitness

Why pay expensive fitness center prices to stay healthy when you can use the Park Place Fitness Room? We have treadmills, elliptical machines, stationary bikes and weight equipment available for you.

**Please Note: Advance sign up for classes & a medical release form must be on file. Form must be renewed yearly.**

**Fitness Center Hours: Mon 9am - 7pm. / Tues, Wed, Fri 9am - 4:30pm. / Thurs 9am - 8pm & Sat 9am - 3pm**

Complimentary Exercise Room at Park Place. Take advantage of our Certified Exercise instructor and our exercise equipment. Train every Tuesday & Thursday 11:30am - 1:30pm.

### MONDAY

\*SeniorSize - 9:15 a.m.  
\*SeniorSize - 10:15 a.m.  
\*Chicago Soul Dancing - 5:30 p.m. (\$2)  
\*Yoga/Meditation - 4:30 p.m.

### TUESDAY

\*Walk Fit 9:00 a.m.  
\*Country Line Dancing 10:00a.m.

### WEDNESDAY

\*Advanced SeniorSize 9:15 a.m.  
\*Yoga/Meditation 10:15 a.m.

### THURSDAY

\*Advanced SeniorSize 9:15 a.m.  
\*SeniorSize - 10:15 a.m.

### FRIDAY

\*Zumba 9:00 a.m.  
Floor Mat Exercises 10:00 a.m.



### SAVE THE DATE

Annual 5K Run/Walk For Seniors!

September 22, 2018  
Waukegan Sports Park  
Waukegan, IL



**Trustees:** Percy Johnson, Nathaniel Hewitt,  
Opal Rice, and Sylvestre Castellanos  
**Clerk** - Rose Staben,  
**Assessor** - Mark Stricklin,  
**Highway Commissioner** - Arthur Craigen

**Park Place Senior Citizens Services  
Committee:**

Chair: Larry Eaker  
Vice Chair: Gloria Carr  
Members: Pat Barker, Scott Grubnau, Katie  
Strawder, Jeanette Keyes, & Sandra Eaker

**Park Place Hours**

**Monday** 9:00 AM - 7:00 PM  
**Tuesday** 9:00 AM - 4:30 PM  
**Wednesday** 9:00 AM - 4:30 PM  
**Thursday** 9:00 AM - 4:30 PM  
**Friday** 9:00 AM - 4:30 PM  
**\*Saturday** Open only for rentals  
**Sunday** Closed

**PARK PLACE**

414 S. Lewis Ave.  
Waukegan, IL 60085

Phone: 847-244-9242

Fax: 847-244-9258

[www.waukegantownship.com](http://www.waukegantownship.com)

**PRESORT STANDARD**

**US POSTAGE PAID**

**PALATINE P & DC**

**PERMIT NO. 418**

**Coping With Grief Group**  
Meets every 2nd Wednesday a month  
10am - 11am at Park Place



Park Place will be closed  
Wednesday, July 4th for  
Independence Day.



**ACKNOWLEDGEMENTS & CONDOLENCES - OUR THOUGHTS ARE WITH YOU.**

**We Remember Seniors  
who've passed away**

**April 3, 2018 - June 10, 2018**

**Marsh Funeral Home**

Richard H. Hyde 4/5/2018  
Robert Burns Townsend Jr. 4/10/2018  
Eva Latva Mcknick 5/25/2018  
Javier Maldonado Sr. 4/7/2018  
Paul Sattler 4/7/2018  
Anne M. Goat 4/21/2018  
Arthur Michael Gusis 4/22/2018  
Sharon Lee Ruona 4/26/2018  
Lewis v. Tyche 5/20/2018  
Dorothy A. Richardson 5/22/2018  
Pastor Henry I. Woods Sr. 5/28/2018

**McMurrough Funeral Chapel**

Dolores J. Merry 5/17/2018

**Ringa Funeral Home**

Carol E. Mortensen 5/17/2018

**The Memorial Chapel of Waukegan**

Maria Ofelia Alvarez 4/10/2018  
Victor Luis Figueroa 4/24/2018  
Francisco Diaz 5/2/2018  
Eric Parrell 5/21/2018

Isidro Medina Vazquez 5/24/2018  
Jesus Bibian 5/26/2018  
Mary Sierra 5/30/2018

**Westgate Funeral Home**

Phyllis Patrick Pugh 4/18/2018  
William Larry Cotton 4/18/2018  
Veola Robinson 4/21/2018  
Peggy Ann Russell 4/25/2018  
Lamar Travis Williams 5/1/2018  
Florenda Jackson 5/4/2018  
Louise Bell 5/18/2018

**Bradshaw & Range Funeral Home**

Beatrice Engram 5/11/2018  
Ophelia D. Foster 5/14/2018  
Claude Taylor 5/15/2018  
Myrtle Hall 5/15/2018  
Emmons Randolph 5/19/2018  
Ella M. Turner 5/26/2018  
Randolph Lewellen 5/26/2018  
David Harris 5/28/2018  
Leon Thomas Maise, Sr. 5/30/2018  
Wilton Hill, Jr. 5/30/2018  
Wilma Jones 5/31/2018  
Myrtle M. Bailer 6/7/2018

**Peterson & Patch Funeral Home**

John Angelos 4/11/2018  
Thomas A. Briscoe 5/12/2018  
Jamie Lynn O'Meara 5/19/2018  
Mack Lewis Jr. 6/1/2018  
Ernestina G. Salinas 6/5/2018

**Bradley Funeral Home**

John Valentine Juncer 4/22/2018

**Congdon & Company Funeral Home**

Kenneth H. Bruner 4/20/2018  
Lloyd A. Nelson 5/1/2018  
Evelyn M. Haas 5/4/2018  
Roger Warren 5/7/2018  
Norma Jean Jensen 6/3/2018  
F. Kristine Buhnerkemper 5/20/2018  
Edward A.C Streed 5/28/2018  
Betty L. McShane 6/1/2018  
Betty Stanczak 6/2/2018

**Warren Funeral Home**

Christina Antonio de la Cruz 5/23/2018

**Gurnee Salata Funeral Home**

Edwin W. Stanislawski 4/7/2018  
James P. Stanczak 4/9/2018  
Arla Sheet 4/27/2018